

## (AP34 AP34PRO M1) DIY expansion M.2 SSD 2242

1, Prepare screwdriver tool, machine, M.2 SSD 2242

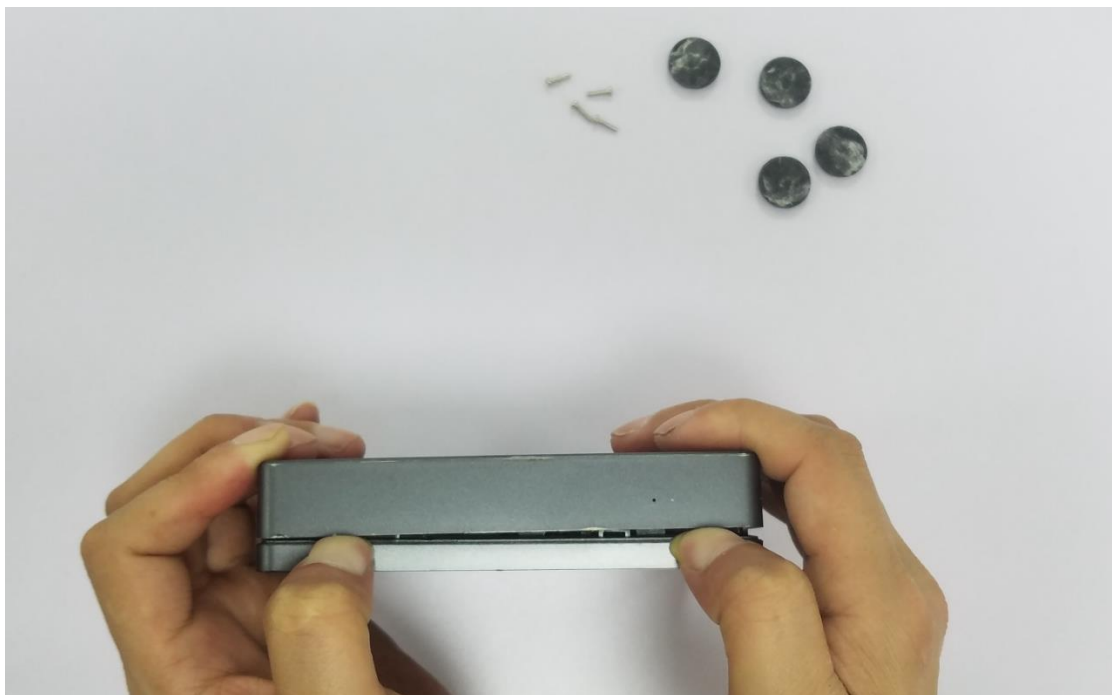


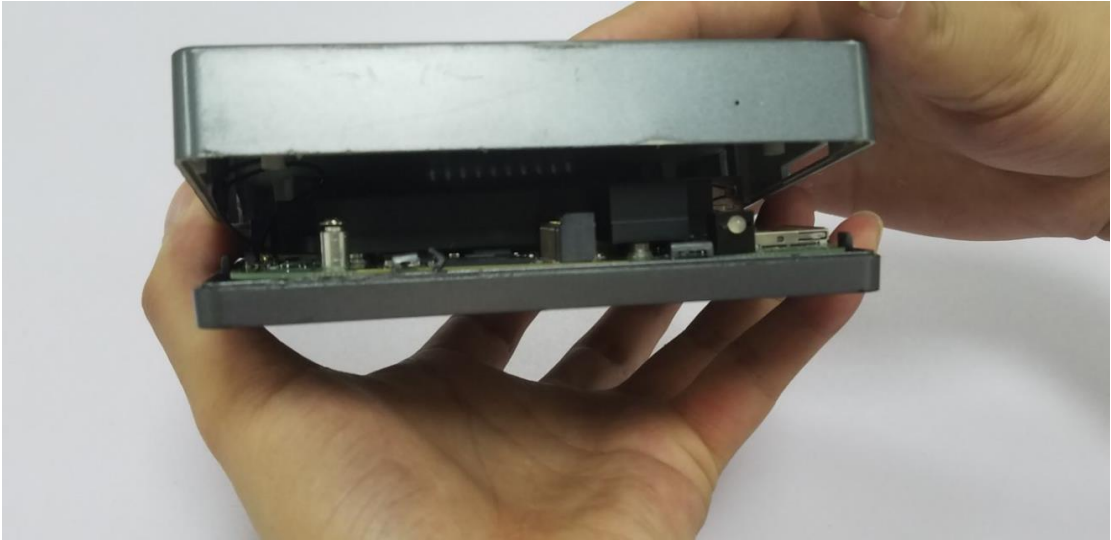
2, Open the floor mat behind the machine and use a screwdriver to remove the screws in the 4 holes.



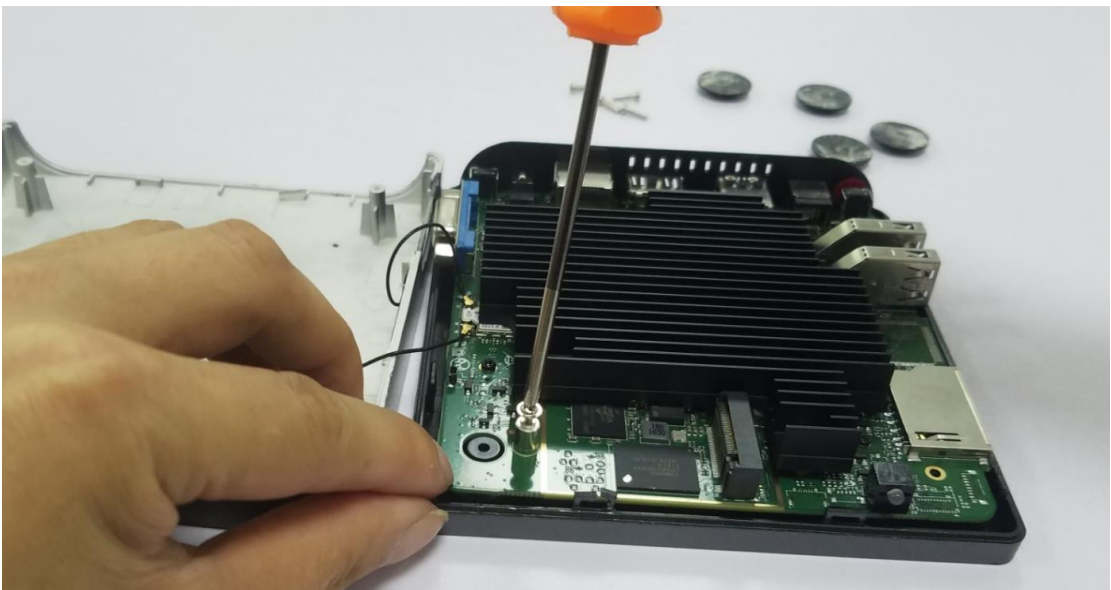
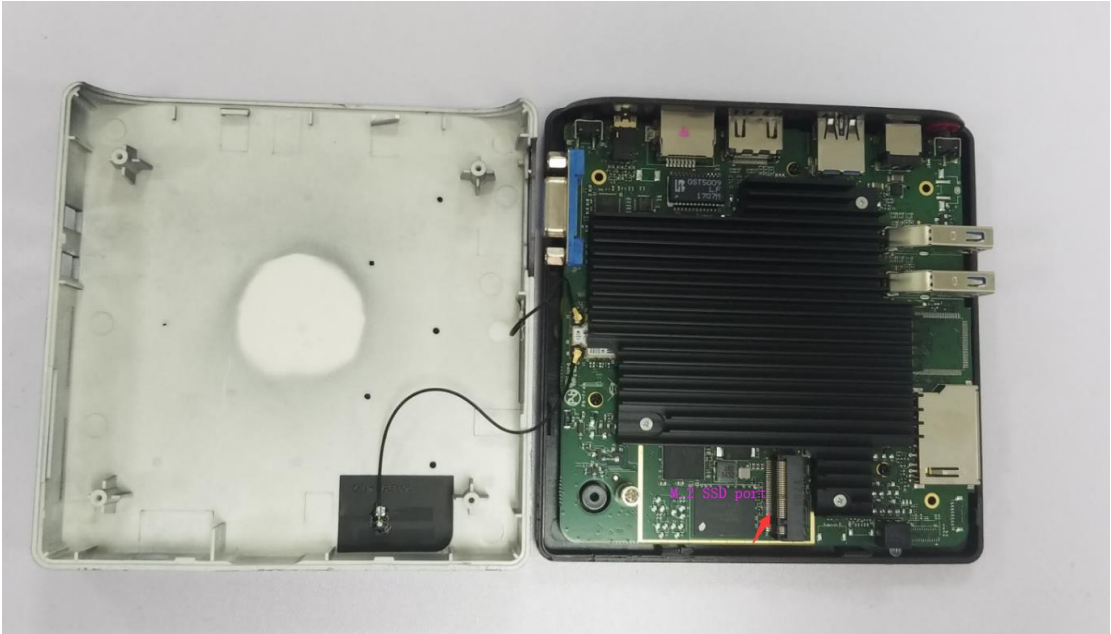


3, use the tool to open the lid gently, pay attention to the WIFI antenna inside, slowly open, flat





4, see M.2 SSD slot and screw next to the heat sink, using a screwdriver to open the screw



5, Align your M.2 SSD 2242, insert it into the card slot, and pay attention to the alignment and orientation



6, after inserting, press and hold the other end and replace the screws





7, Finally, cover the machine cover, replace the screws, floor mats

Boot detection, identify SSD, complete DIY expansion

END