

USB线刷教程


需要准备的硬件：电脑，USB 线

1. 下载刷机工具：USB_Burning_Tool_V2.1.6.8(注意 GT1 mini 必须使用此工具版本刷机，老版本刷机工具不能进行刷机)

工具下载链接链接：

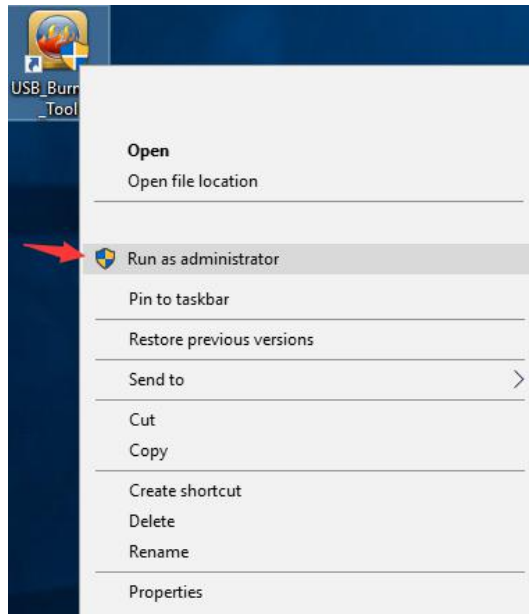
https://beelink-my.sharepoint.com/:f:/g/personal/firmwareservice_beelink_onmicrosoft_com/Evt_dCFRICqVOMVR8NJDcBSXfQ4_VW83gvH50emxF0iA?e=OoUWKE



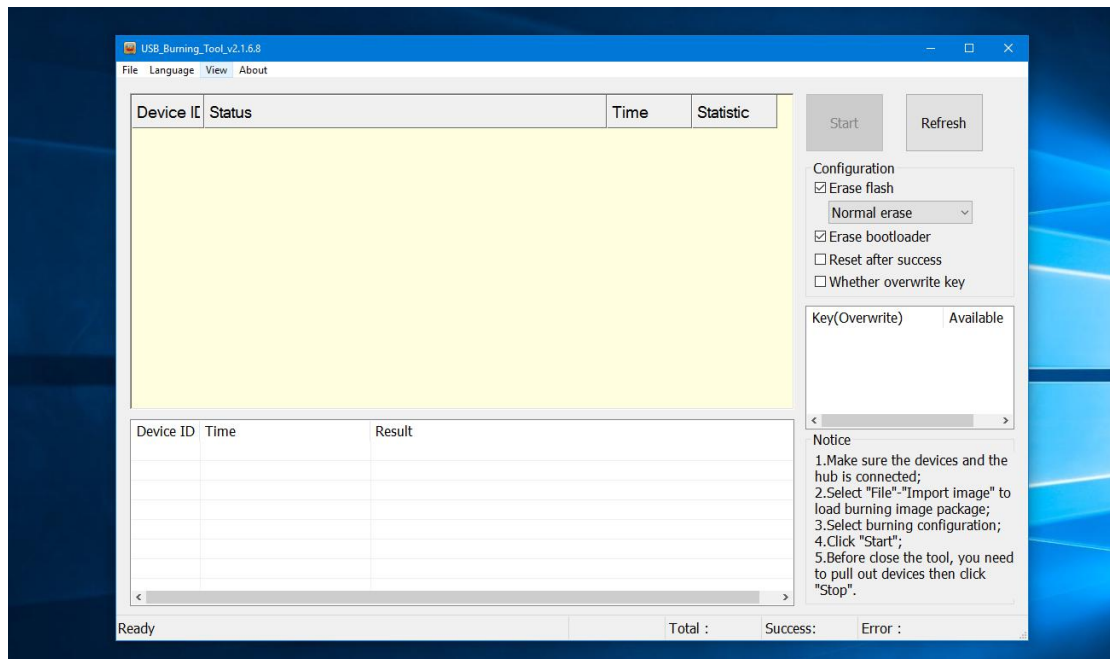
按照向导提示一步步安装并完成，出现  图标

2. 下载安装包，存放好位置，便于找到

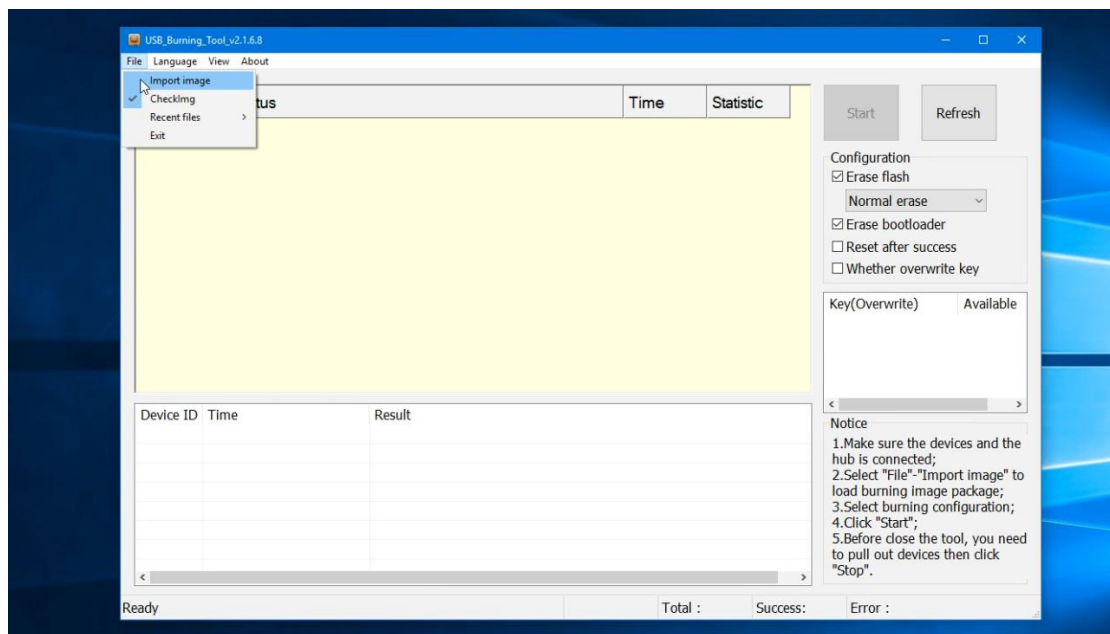
3. 右击 Run as administrator，以管理员身份运行



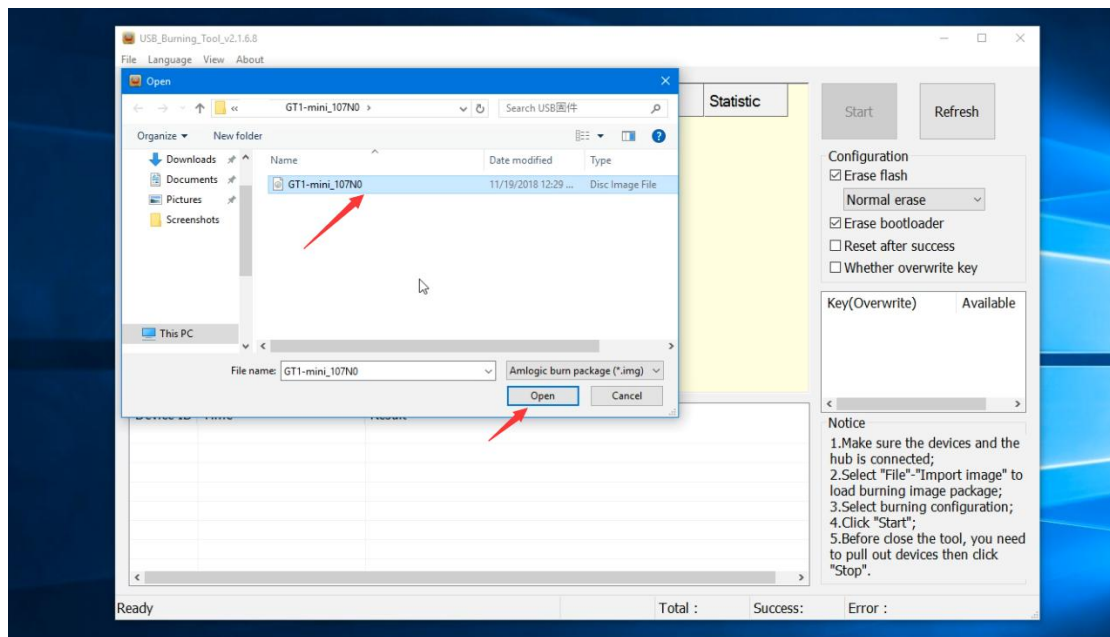
4. 弹出刷机界面，如下图所示



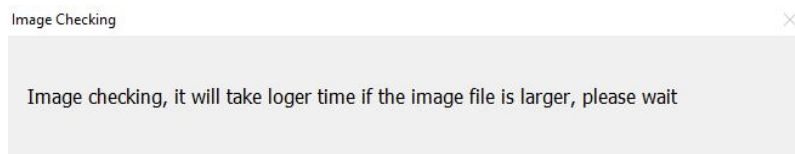
5. 点击左上角 File，选择 Import image，如下图所示



6. 加载固件，点击 Import image 进入，找到下载的 USB 固件位置，选择并点击打开，如下图所示



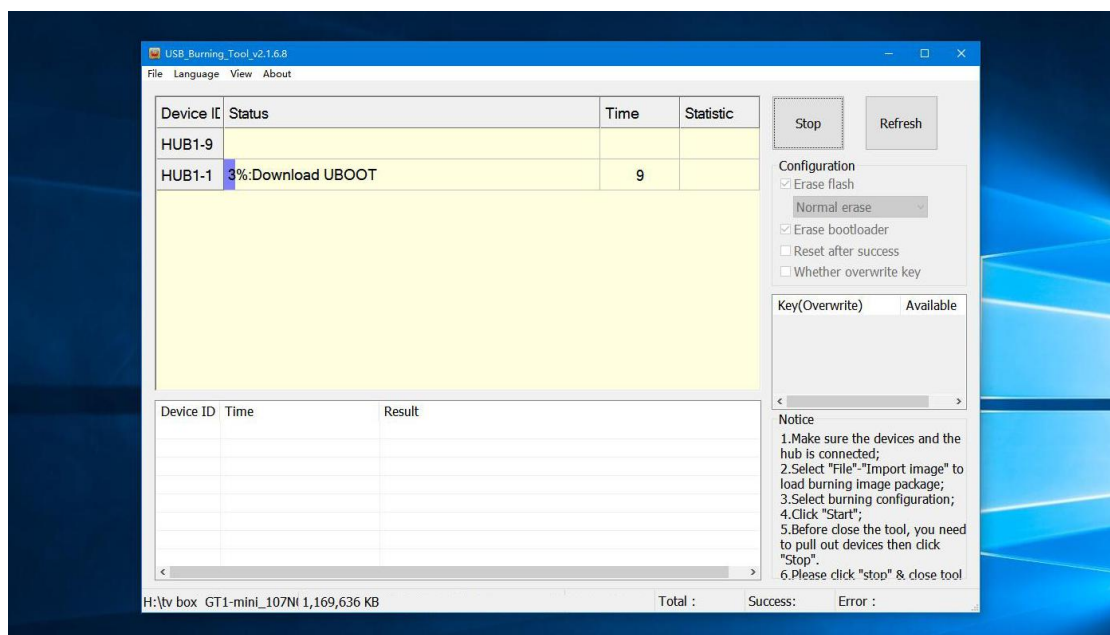
7. 弹出该界面，等待该界面消失，即代表刷机包加载完全，然后点击 Start



8. 将 USB 一端插入电脑 USB 接口，然后将 USB 另一端插入 GT1 mini 右边的 USB2.0 接口 (注意：只能插入右边的这个 USB2.0 接口位置)



9. 等待出现加载界面，如下图所示



10. 加载 100%，点击 stop，关闭工具，完成刷机

USB_Burning_Tool_v2.1.6.8

File Language View About

Device ID	Status	Time	Statistic
HUB1-9			
HUB1-1	100%:Burning successfully	3:26	0/1

Stop Refresh

Configuration

Erase flash

Normal erase

Erase bootloader

Reset after success

Whether overwrite key

Key(Overwrite) Available

Notice

- 1.Make sure the devices and the hub is connected;
- 2.Select "File". "Import image" to load burning image package;
- 3.Select burning configuration;
- 4.Click "Start";
- 5.Before close the tool, you need to pull out devices then click "Stop".
- 6.Please click "stop" & close tool

Device ID	Time	Result
HUB1-1	2018-11-19 05:50:13 479	[0x00000000]Burning successfully




H:\tv box GT1-mini_107N\ 1,169,636 KB Total :1 Success:1 Error :0

SD 卡刷机教程

需要准备的刷机硬件：SD 卡




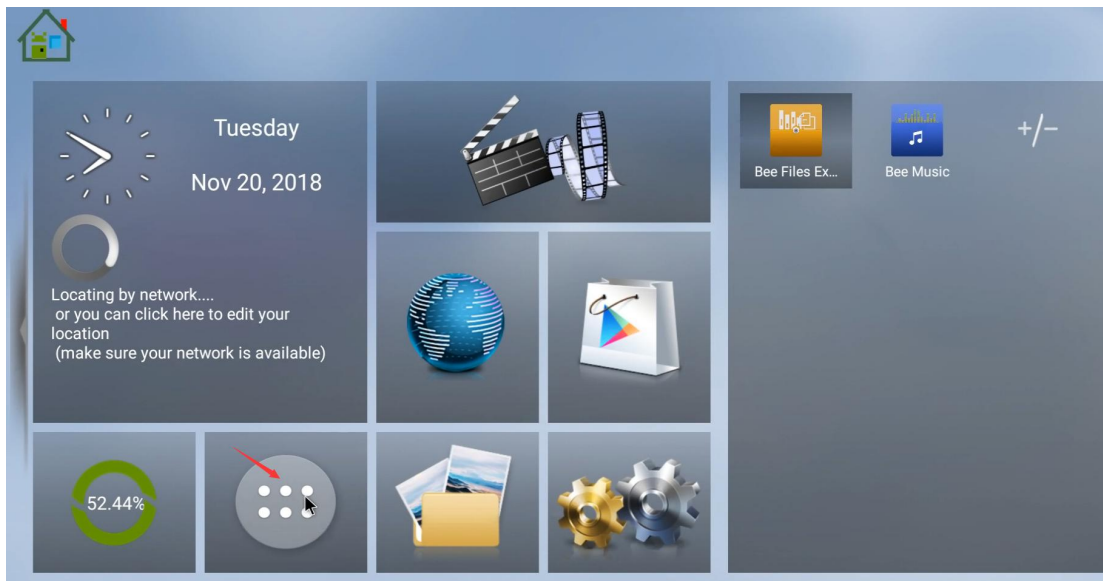
1. 将如下下载好的 SD 卡刷机固件拷入 SD 卡根目录 (SD 卡格式必须为 FAT32)

Name	Date modified
 factory_update_param.aml	11/19/2018 12:29 ...
 recovery	11/19/2018 12:29 ...
 u211-ota-20181119	11/19/2018 12:30 ...

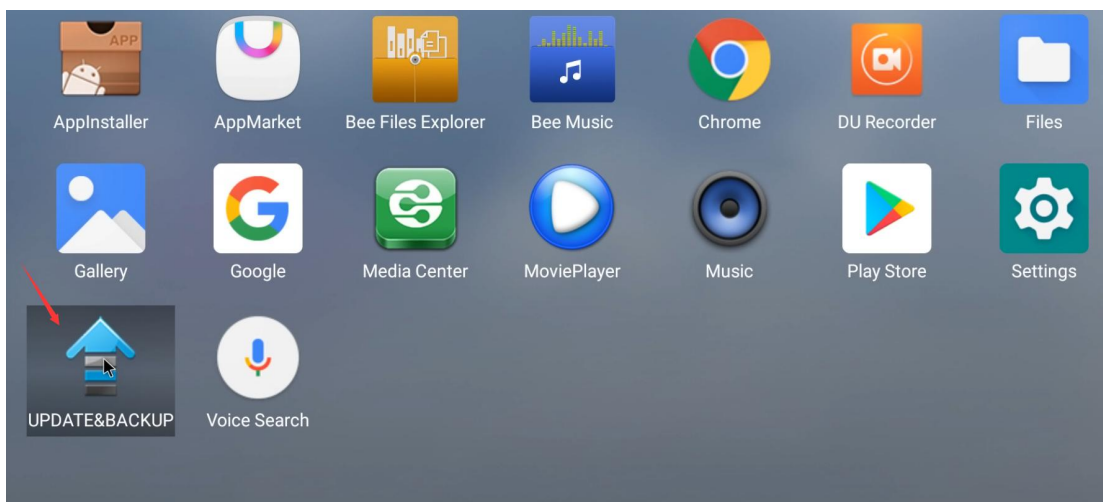
2. 将 SD 卡插入 SD 卡卡槽位置，插上 HDMI 线，接通显示器，插上电源开机



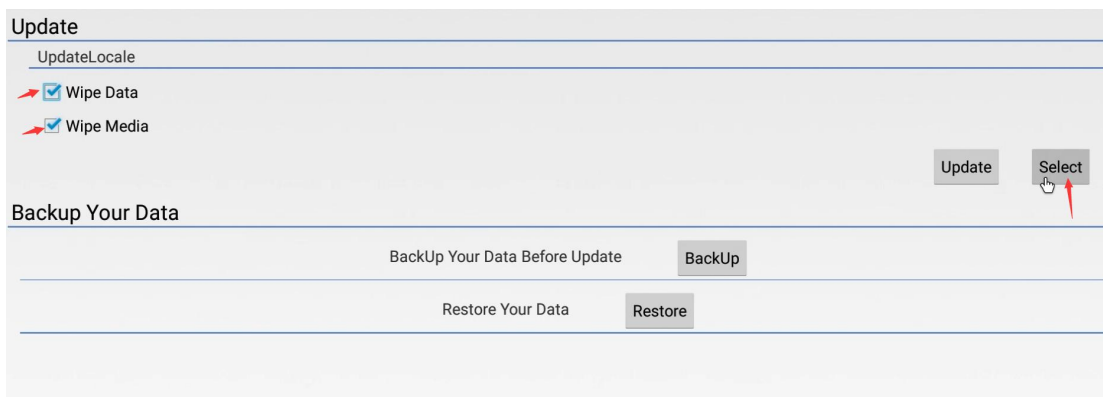
3. 进入主页，点击图标，进入应用页



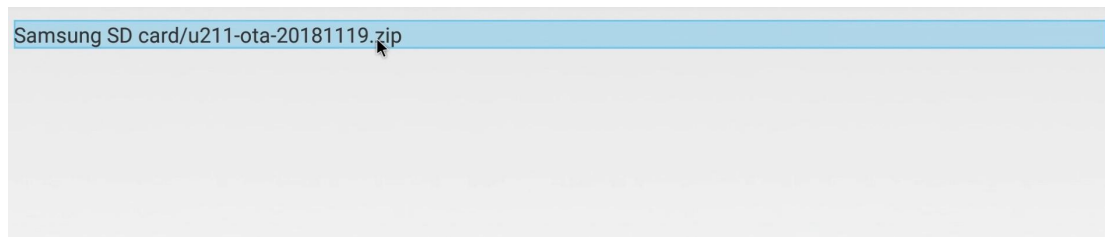
4. 点击 UPDATE&BACKUP 打开



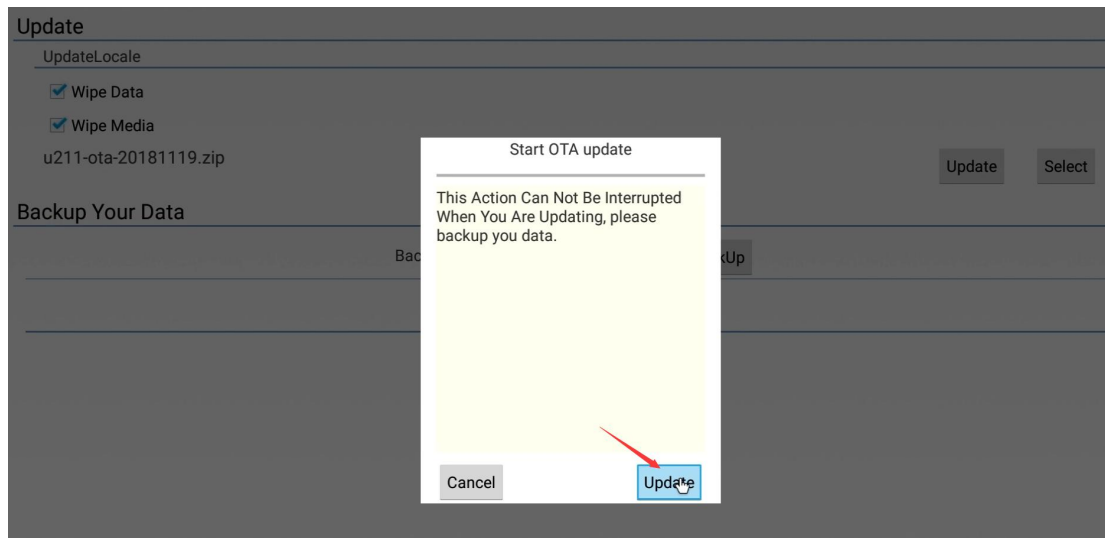
勾选 Wipe Data 和 Wipe Media, 点击 Select



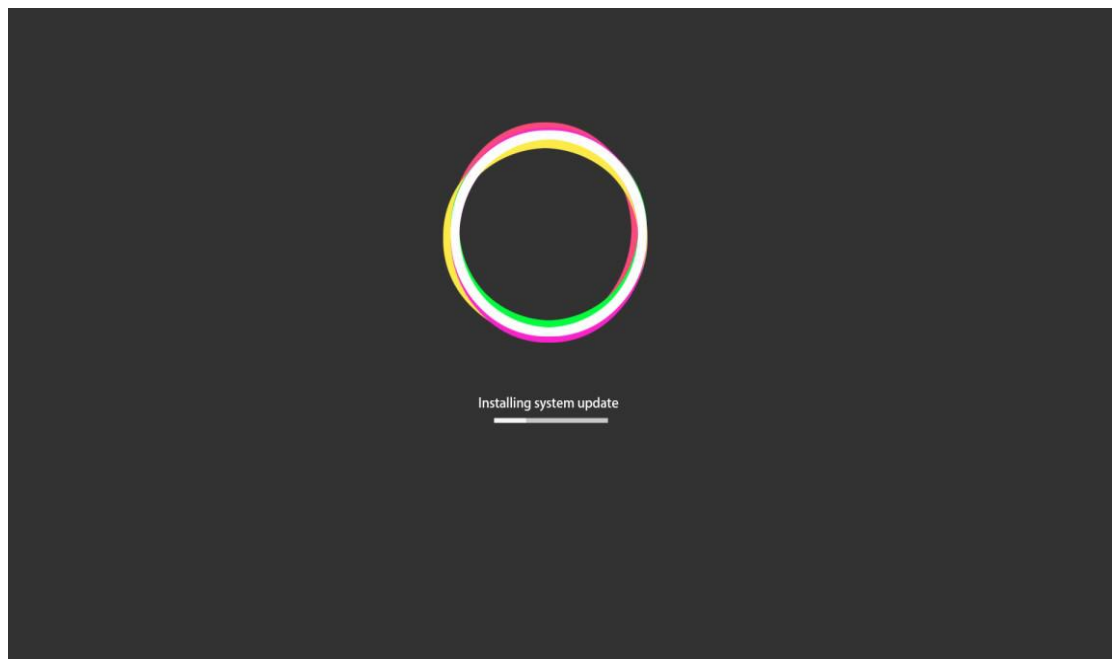
弹出 SD 卡刷机包，点击选定



弹出如下对话框，点击 Update，开始进行升级



等待升级完成



完成

More: www.bee-link.com

Service Email: beelinkservice@bee-link.com