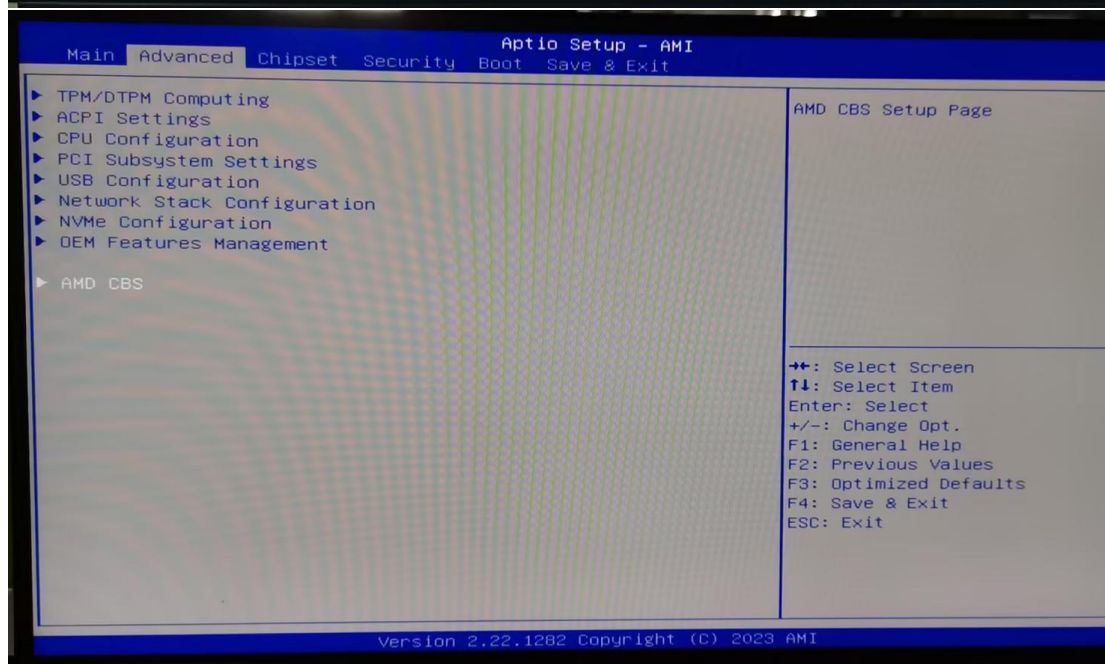
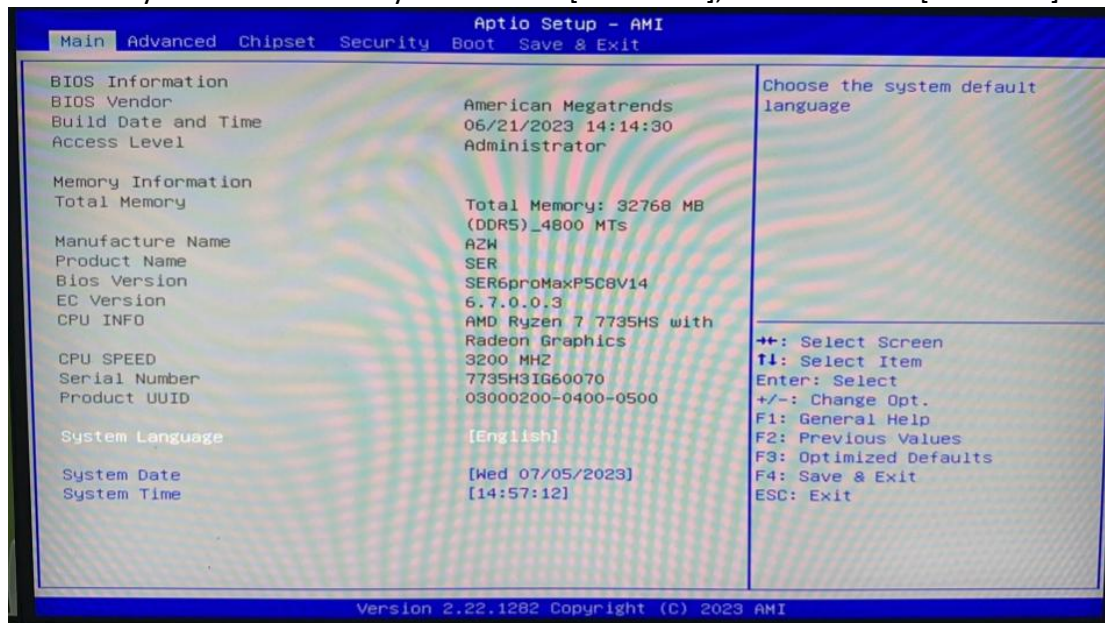
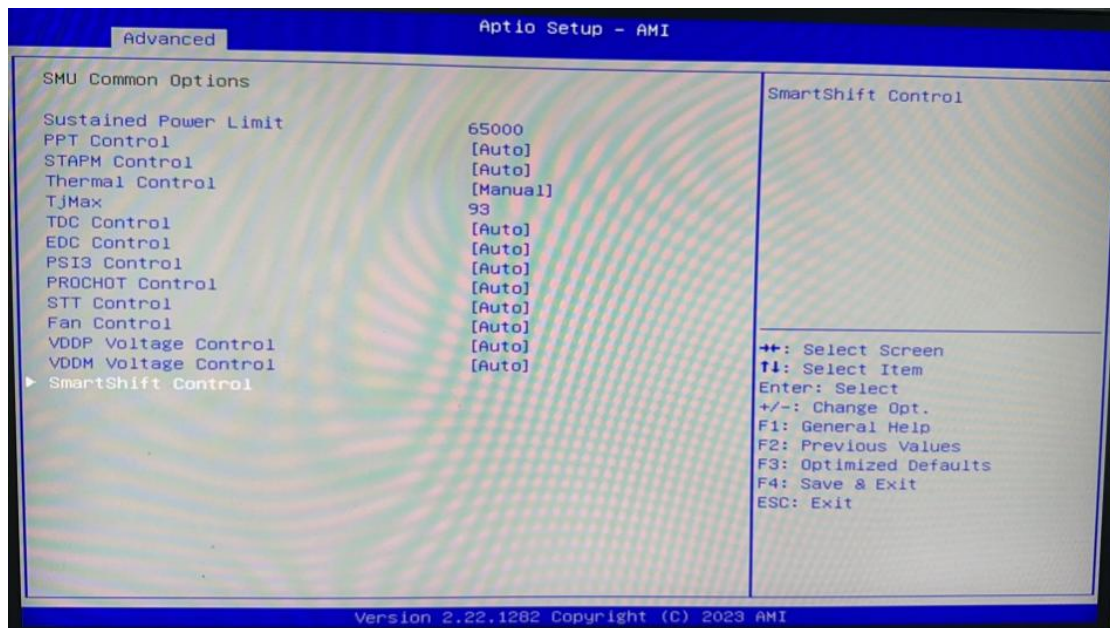
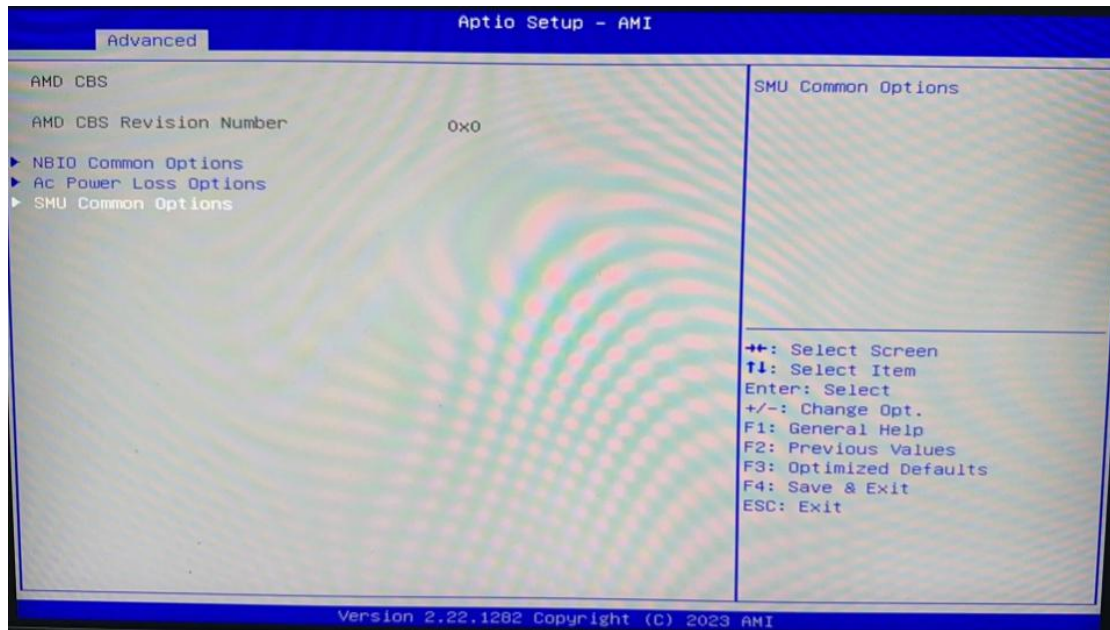


Change SER7735 Max power tutorial

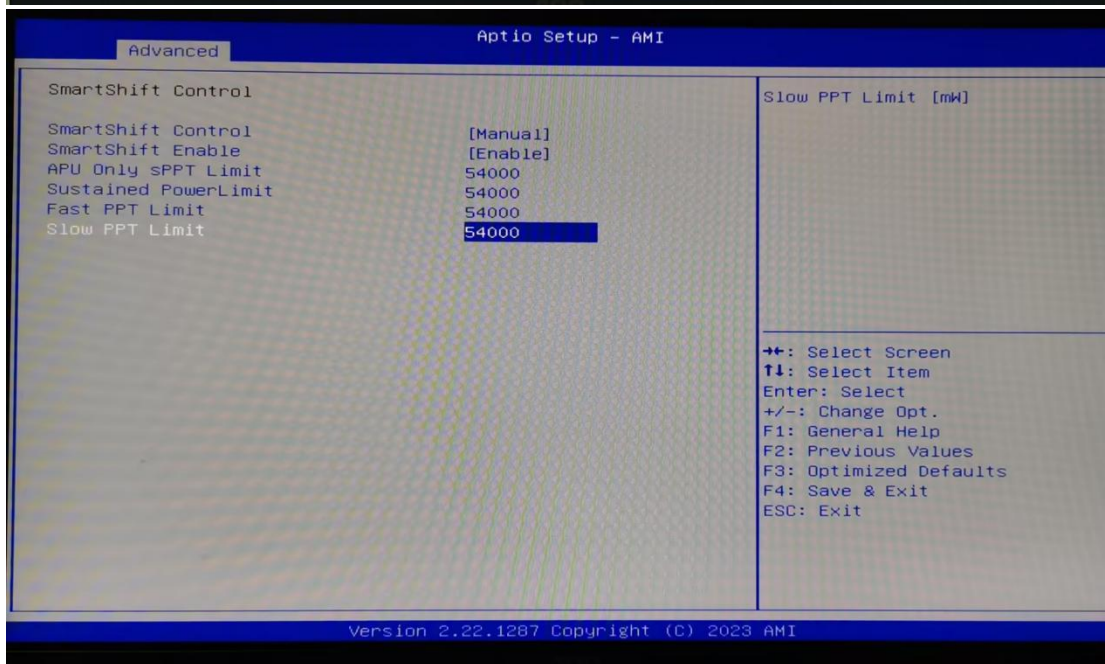
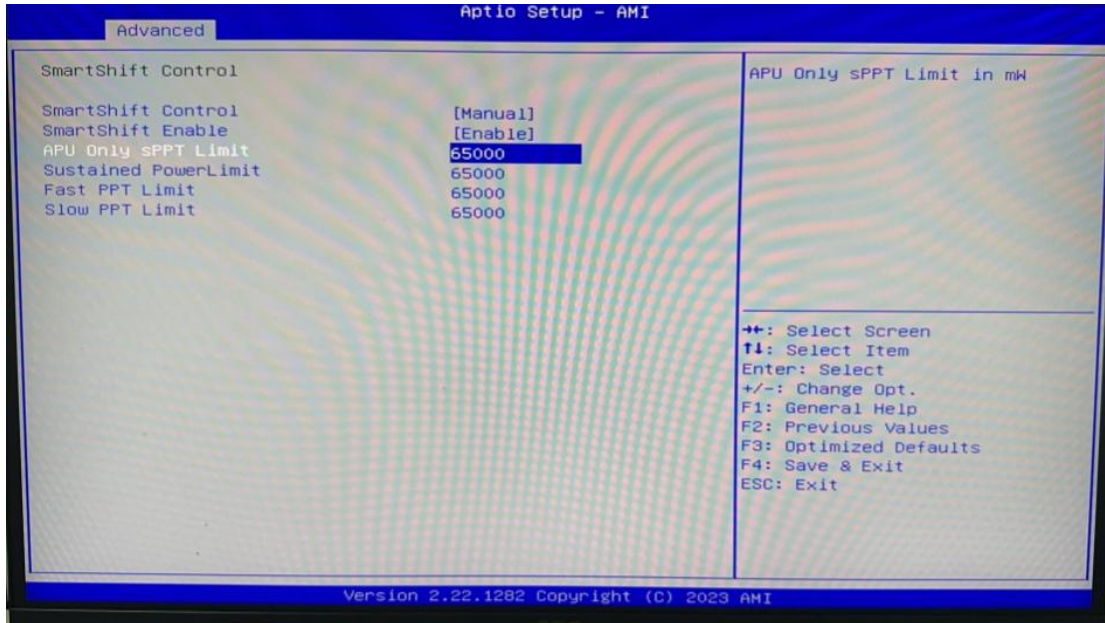
1. After turning on the PC, keep pressing the keyboard "Delete", enter the BIOS page, use the keyboard direction keys to find the [Advanced], select to enter [AMD CBS].



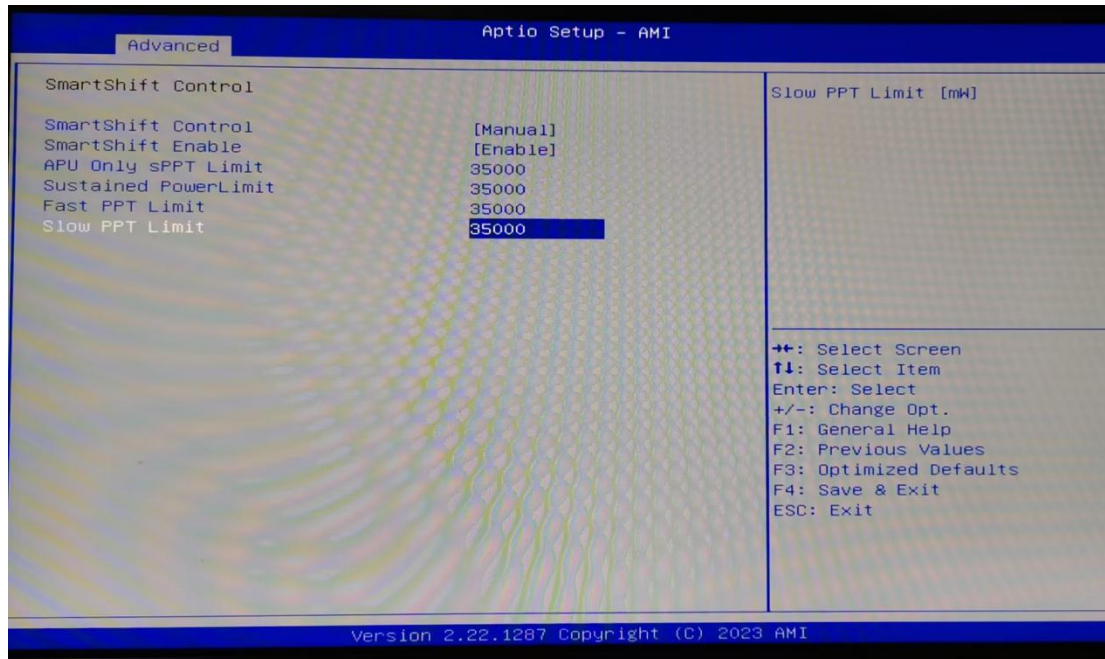
2. Enter the [SMU Common Options], select to enter the [SmartShift Control].



3.If you want to change the power to the 54W,change the [APU Only SPPT Limit],[Sustained PowerLimit],[Fast PPT Limit] and [Slow PPT Limit] to[54000],like below.



4.If you want to change the power to the 35W,change the [APU Only SPPT Limit],[Sustained PowerLimit],[Fast PPT Limit] and [Slow PPT Limit] to[35000],like below.



5.Press F4 to save and wait for the computer to automatically restart into the desktop.You could unplug the power supply and plug it back again to test whether the setting is successful.