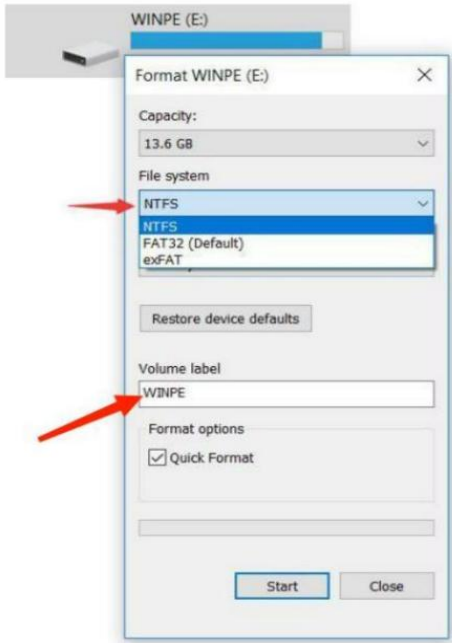
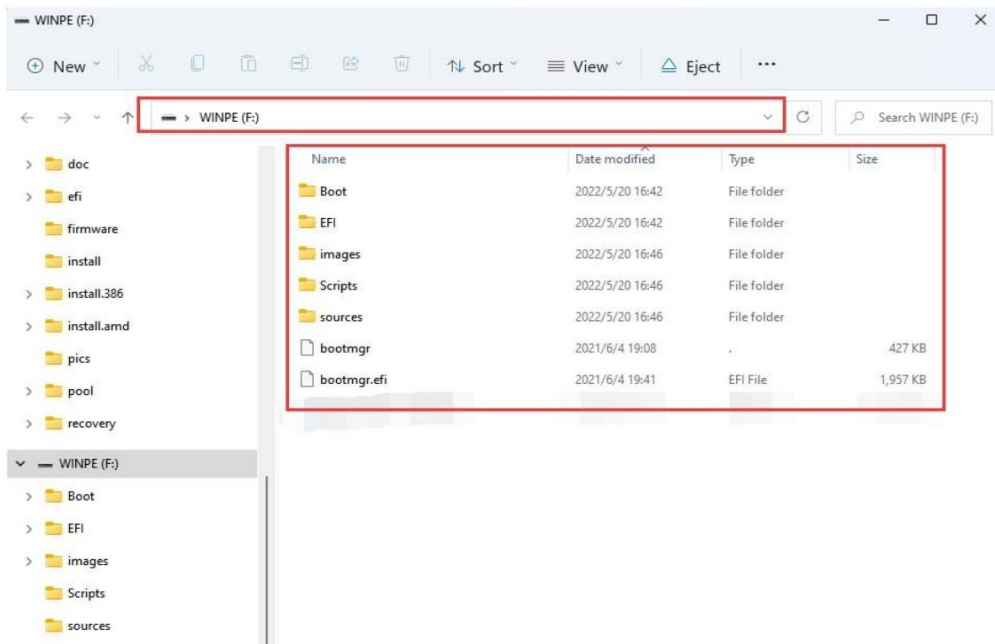


How to install Windows system?

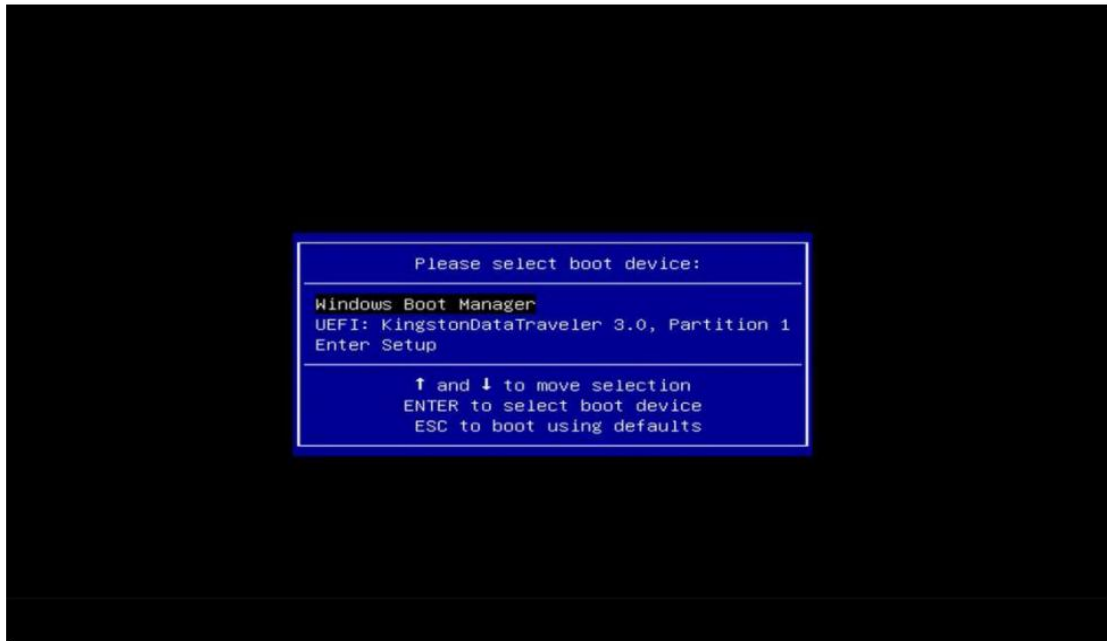
1. Prepare a U disk (USB driver) with a storage capacity of at least **16 GB**
2. Right click and select format... Format U disk to **NTFS** format, and change the Volume label to **WINPE**, click start to finish formatting (Under the computer start options > click the right mouse button, > select Disk Management > select your USB flash drive)



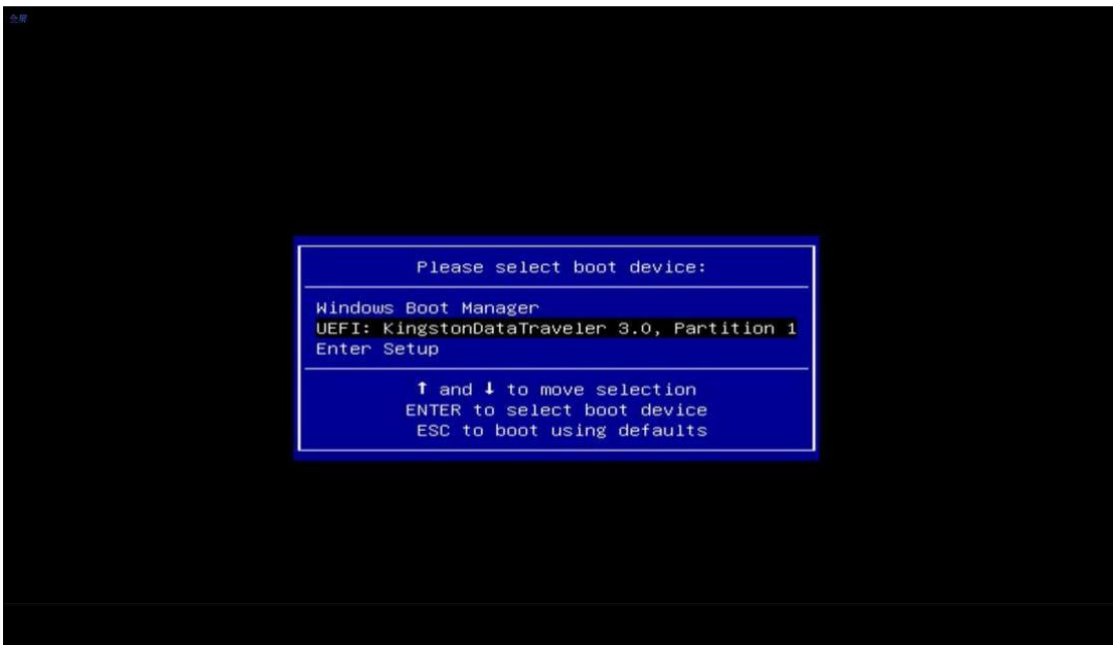
3. Copy your system files to U disk, and it must be in the root directory of U disk.



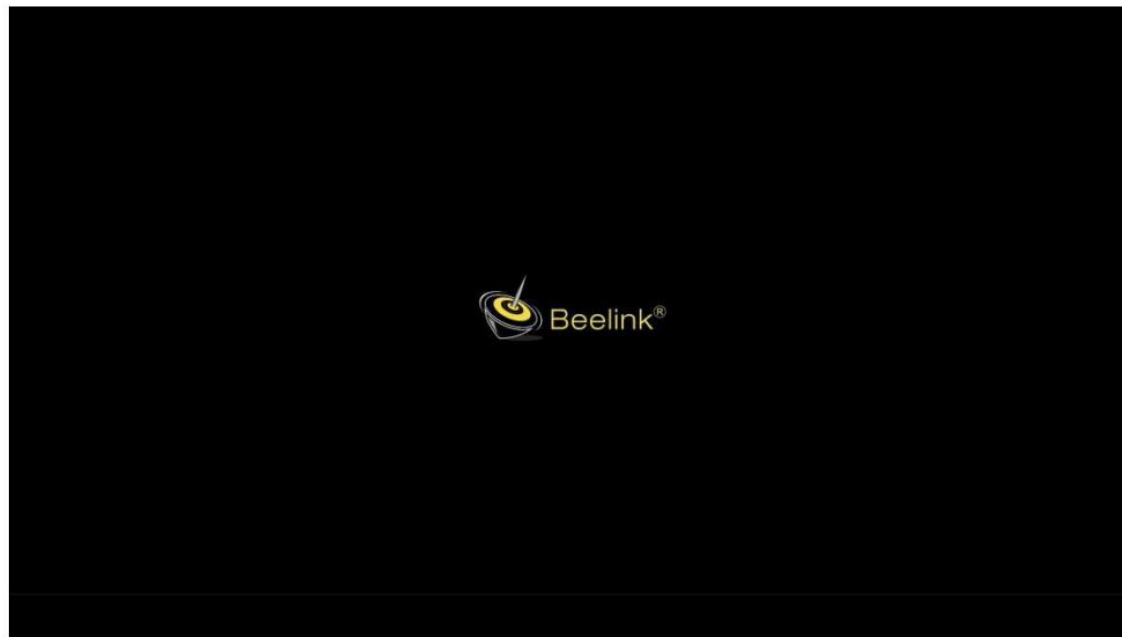
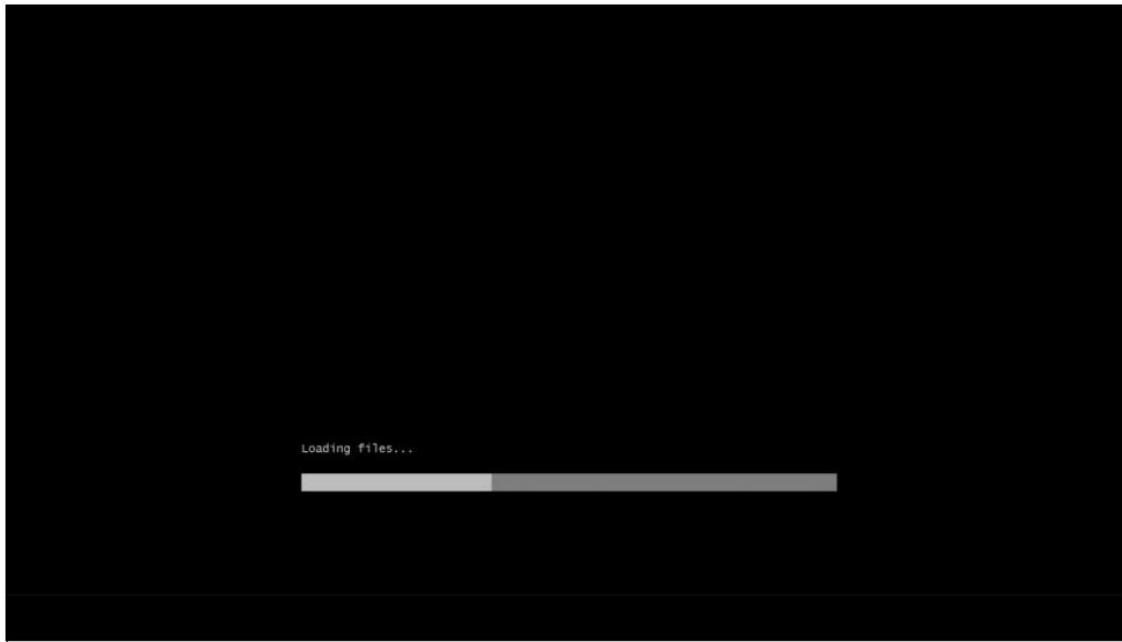
4. Insert the U disk, boot your mini pc and immediately press F7 repeatedly to enter the boot device menu interface.



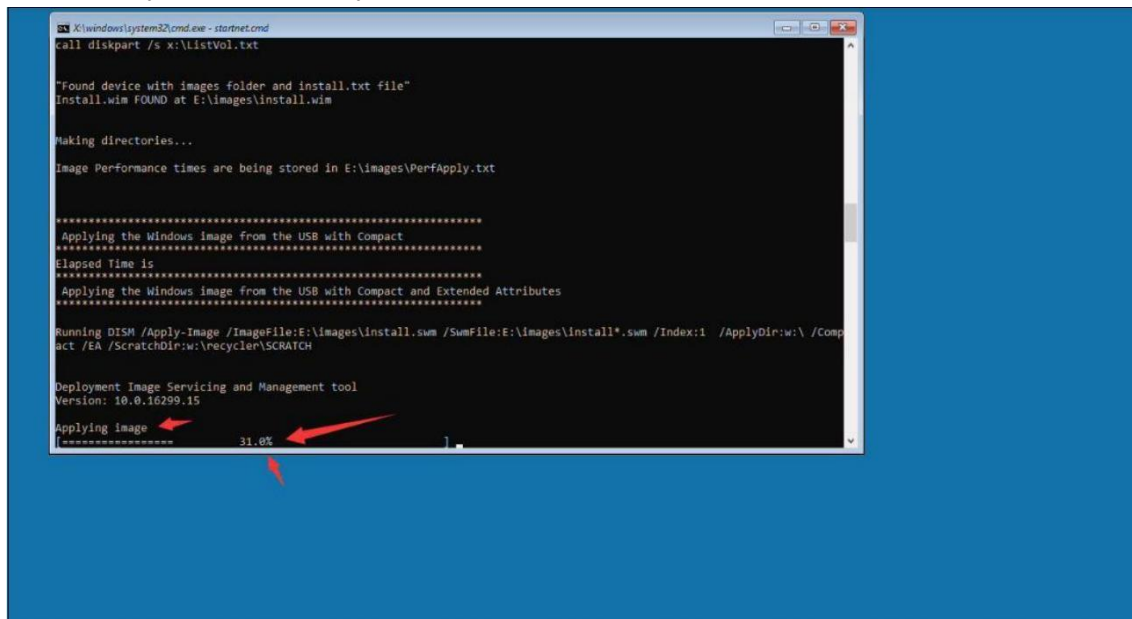
5. Select UEFI and press Enter to enter.



6. Enter the loading system interface, just wait for automatic loading.



7. Enter the following loading interface, wait for the installation (During the automatic installation process, do not power off and other operations), until 100% is completed, it will automatically restart into the system (also remove the U disk)



8. Wait for the machine to automatically turn on and complete the installation.